



Ribe Camping



WELCOME TO RIBE CAMPING

We offer camping, Hotel Cabins, holiday homes and a Penthouse in the middle of the Wadden Sea National Park. Visit Denmark's oldest town, Ribe, and experience for yourself why it has been named Europe's most beautiful small town. With us you will find world class nature and culture, just outside the campsite. We also have some of Denmark's finest service buildings, and we place great emphasis on quality. Ribe Camping is known for its quiet and relaxing atmosphere, personal service, large play area for children and first-class cleaning standards.



LIKE A SMALL HOLIDAY HOME FILLED WITH COZYNES, PEACE AND PRESENCE

Capacity: 4 persons

For an additional fee, there is the possibility of 2 extra persons on the sofa bed.

The Wadden Sea Cabins are beautifully situated at the edge of the forest at Ribe Camping.

The holiday home is 32 m² and equipped with a fully furnished kitchen including a refrigerator with a freezer compartment, stove, oven, dishwasher and dining area.

The kitchen is connected to a living room with a sofa/sofa bed and a TV.

There are 2 separate bedrooms, both are furnished with double beds (140x200cm).

All beds come with duvets and pillows.

The holiday home has its own bathroom with toilet,
as well as a covered wooden terrace with garden furniture.

There is a private parking lot right next to the holiday home, where there is space for one car.
Additional cars should use the parking lot at the entrance to Ribe Camping.

BREAKFAST

We offer fresh baked bread every day.

Pre-ordering is recommended, either in the shop or via cWallet,
no later than one hour before the shop closes.

The link to cWallet can be found in the booking confirmation.

INVENTORY WADDEN SEA CABIN



Plate	6	Small glass bowl	1
Dinner Plates	6	Medium glass bowl	1
Bowls	6	Big glass bowl	1
Egg cups	6	Plastic bowls	3
Forks	6	Small ceramic bowls	3
Knives	6	Sieve	1
Tablespoons	6	Ceramic jug	1
Teaspoons	6	Sauce boat	1
Water glass	6	Cutting board	1
Wine glass	6		
Small glass	6	Frying pan	1
Mugs	6	Pots with lids	3
		Ovenproof dish	1
Bread knife	1	Cork plates	2
Chef's knife	1	Coffee machine	1
Paring knife	1	Electric kettle	1
Peeling knife	1	Toaster	1
Scissors	1	Thermos	1
Big plastic spoons	2	Breadbasket	1
Spatula	1	Kitchen roll stand	1
Whisk	1	Ashtray	1
Potato spoons	2	Cleaning kit	1
Vegetable spoon	1	Dustpan and broom	1
Cheese slicer	1	Broom	1
Corkscrew	1	Shower scraper	1
Tin opener	1	Hangers	6
Garlic press	1	Drying rack	1
Measuring jug	1	Bio bin	1
		Recycling Bag	1

WOULD YOU LIKE TO BORROW A GRILL?

A small gas grill can be borrowed free of charge by contacting the reception.

Gas can be bought in the shop and the grill must be returned cleaned to the reception.



ARRIVAL AND DEPARTURE

Check-in from 3.00 pm
Check-out until 10.00 am

Departure outside reception opening hours must be arranged with the reception the day before departure. Please remember to leave the house tidy, empty the garbage and take off bed linen before departure.

PETS

With the exception of our allergy-friendly cabins, pets are allowed for an additional fee. Pets are not permitted on beds or furniture, nor are they allowed in the service buildings.

SMOKING

Smoking is not allowed in holiday homes and service buildings.
Fee for extra cleaning due to smoking € 413,79.

RENTAL AGAINST SURCHARGE

Linen package with towel
Sheets or towels
Baby bed and highchair
Baby duvet and linen

TV CHANNELS

DR1, TV2, DR2, TV3, RTL, og ARD (Das Erste)

By any faults / defects in the holiday home - please contact the reception.

TELL US ABOUT YOUR STAY

At Ribe Camping we love our guests, and we will do our best to help you enjoy your stay. If you have something at heart, praise or criticism, then come to the reception – we always like to receive suggestions and ideas for how we make Ribe Camping the best accommodation in Denmark.

If we are busy with other guests, write a note to us - and we will look at it.

Many thanks in advance!



CHARGING ELECTRIC CAR

It is possible to charge 2 electric cars at our charging stations.

The charging stations are only available to guest on the site, and charging takes place via Monta-app.

SERVICE BUILDINGS

Kitchens and common rooms with dining areas and TV are free to use in building C, E and G.

In all service buildings there is a coffee machine and electric kettle.

There is a refrigerator in buildings C and G and a freezing box in building G.

OUTDOOR KITCHEN

Use the beautiful outdoor kitchen in building F with barbecue, cooking sections, sinks and dining area.

Here you can enjoy fresh air while cooking and eating.

FOR CHILDREN

Ribe Camping offer good facilities for children. Playgrounds with bouncy cushion, football field, climbing tower, fenced Moon Car area etc. The playgrounds are open from 9.00 am – 9.00 pm.

In building B is a large playground and activity room.

At the reception you can also rent large go-karts and table tennis bats/balls.

The outdoor table tennis can be used for free.

In building E and G you find a children's bathroom with small toilets, shower facilities, in building G even an atmospheric aquarium with fish – worth a visit.

OUTDOOR HEATED SWIMMING POOL

The swimming pool is open from 1/6 – 31/8 and can be used for free by guests staying at Ribe Camping.

Day visitors buy tickets in the reception.

RENTAL OF COMMON ROOMS

By larger groups or parties it is possible to rent some of the common rooms – please contact the reception for further information and prices.

FOLLOW US ON FACEBOOK AND INSTAGRAM



Follow us on Facebook and get notified about news and great deals.



Share your very best moments at Ribe Camping.
Tag @ribecamping at your picture and use #ribecamping

OTHER INFORMATION



SHOWER AND LAUNDRY

By arrival all guests receive a card to use for entering the gate and for the showers in building C, E and G.

Each shower cost € 1,10 for 4 minutes hot water, and when using the family rooms there is an extra charge of € 0,68 upon the hot water.

By departure the card must be handed back to the reception and the showers must be paid.

The card can also be used for washing machine and dryer in building C and E.

Washing machine € 4,13 incl. soap and softener. Dryer € 2,75 each machine.

ORDERING FRESH BREAD

It is recommended to preorder bread for the next day and not later than 1 hour before the shop closes.

You can order bread either in the shop or online via cWallet.

In high season and on bank holidays, we always make extra bread, but special requests and large orders can only be guaranteed by preorders.

DRIVING AT THE CAMPSITE

We take care of our guest, and therefore it is not allowed to drive at the campsite between 11.00 pm - 7.00 am.

The gate is also closed for passage between 11.00 pm - 7.00 am.

Remember - speed limit on the campsite is 10 km/h.

WIFI

We offer WIFI all over the campsite - Buy password at the reception.

WOULD YOU LIKE TO BORROW A VACUUM CLEANER?

Vacuum cleaner can be borrowed free of charge by contacting the reception.

DEFIBRILLATOR

Defibrillator is available in the kitchen in building E.



IMPORTANT PHONE NUMBERS

Emergency	112
Police	114
Medical Emergency	+45 70 11 07 07

ATTRACTIONS



RIBE CATHEDRAL



THE OLD TOWN RIBE



SKIBBROEN



RIBERHUS SLOTSBANKE



THE OLD TOWN HALL



MUSEET RIBES VIKINGER



JACOB A. RIIS MUSEUM



HEX! MUSEUM OF WITCH HUNT



RIBE ART MUSEUM



THE NIGHT WATCHMAN



GUIDED WALKS IN RIBE



RIBE PLANTAGE



RIPLAY



SCT. CATHARINÆ KIRKE



RIBE SWIMMING BATH



ATTRAKTIONER



RIBE BREWERY



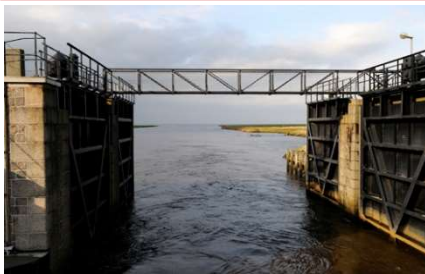
RIBE VIKINGECENTER



VESTER VEDSTED VINEYARD



KAMMERSLUSEN



WADDEN SEA CENTRE



WADDENSEA NATIONAL PARK



BLACK SUN



SEAL SAFARI



OYSTER SAFARI



TRAKTOR BUSS TO MANDØ



MANDØ ISLAND



MANDØPIGEN – TOUR FERRY



DISCOUNT FOR ATTRACTIONS

As an overnight guest, you can buy tickets for various attractions at a special price at our reception, so please stop by.

